



Foundations in the Cloud: Getting Started with Azure PaaS



Chedy Missaoui

aMP Hammamet
21/09/2025



Thanks to our SPONSORS !

Diamond



Platinum



Platinum



Platinum



Gold



Gold



Community



Upcoming aMP Events – 2nd Half of 2025





Why Platform as a Service Matters Today ?



Operations Engineering,
Dead?!



Chedy Missaoui

- Technical Account Manager
- DevOps & Cloud Architect at Tessan Group



Chedy Missaoui



techdominator.com



MissaouiChedy

TESSAN GROUP
YOUR TRUST PARTNER



Agenda

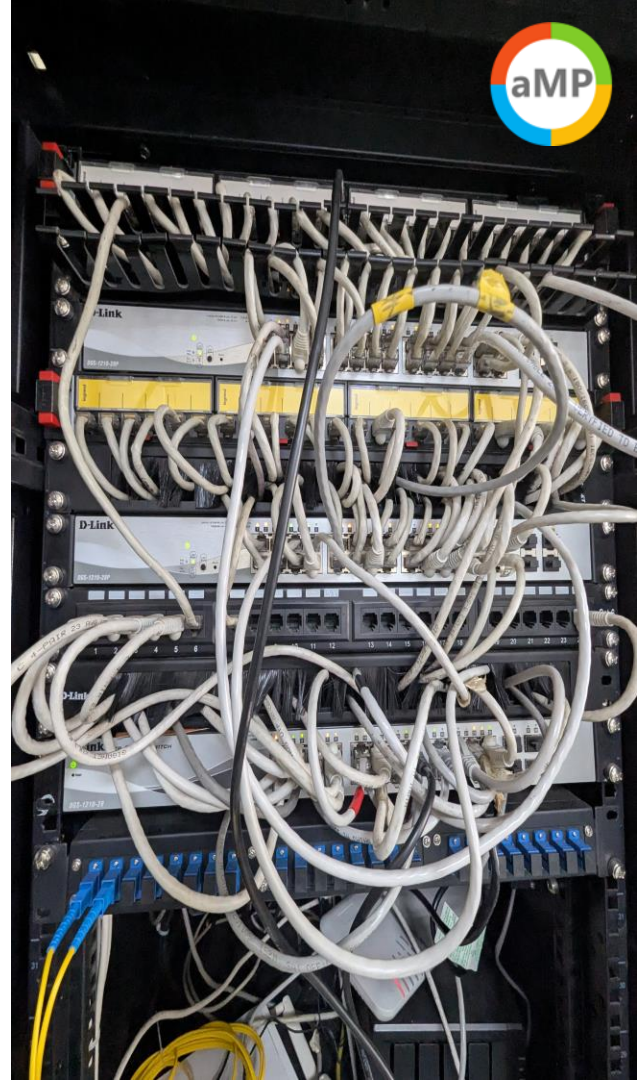
1. PaaS Fundamentals & Trade-Offs
2. Core Azure PaaS Services
3. Security & Operations
4. Cost & Business Value

PaaS Fundamentals & Trade-Offs



What PaaS Removes

- Physical Hardware
- Operating System Management
- Capital Cost



What PaaS Enables



Accelerated Delivery
• **Scalability**

PaaS Caveats (1/2)

12 Factor App

Code Base

Dependencies

Configuration

**Backing
Services**

Build/Release

**Stateless
Processes**

Port Binding

Concurrency

Disposability

**Dev/Prod
Parity**

Logs

**Admin
Processes**

PaaS Caveats (2/2)

■ Dependencies

- Don't assume dependencies
- Use dependency management tool (apt, NuGet, npm...)

■ Configuration

- Don't assume local files
- Use a configuration store

■ Backing Services

- Don't assume a specific instance
- Make it configurable

■ Stateless Processes

- Don't assume 1 stateful
- Keep services stateless and share nothing

■ Disposability

- Apps must start and gracefully stop fast

PaaS Trade-offs

- Less Flexibility compared to VM/Physical Machines
- Vendor Lock-in
- Requires up skill



The background image shows a large, ornate interior space with high ceilings, white marble columns, and large, decorative chandeliers. The architecture features multiple levels and arches, creating a sense of grandeur and depth.

Core Azure PaaS Services

Azure App Service

- Web Application Hosting
- Simple Slot Model
- Supports multiple development stacks
- Supports advanced deployment patterns



Azure Functions



- Serverless Functions
- Pay per use down to the call
- Supports durable functions
- Ideal for background services & short running jobs

Azure SQL

- Cloud Based Relational Database
- Vertical Scaling elasticity
- Many flavors:
 - Database
 - Managed Instance
 - SQL VM



Azure Cosmos DB



- Geo Distributed Multi-Model Database
- Horizontal Scaling
- Support many models:
 - Document
 - MongoDB API
 - Graph (Gremlin API)
 - Relational

Azure Service Bus

- Enterprise grade messaging system
- Supports advanced messaging patterns
- Reliable message delivery



Azure Communication Service



- E-Mails
- SMS/Chat
- Phone Calls

Security & Operations



Private Networking

- Virtual Networks & Private Endpoints
- VPN Gateways
- Express Route



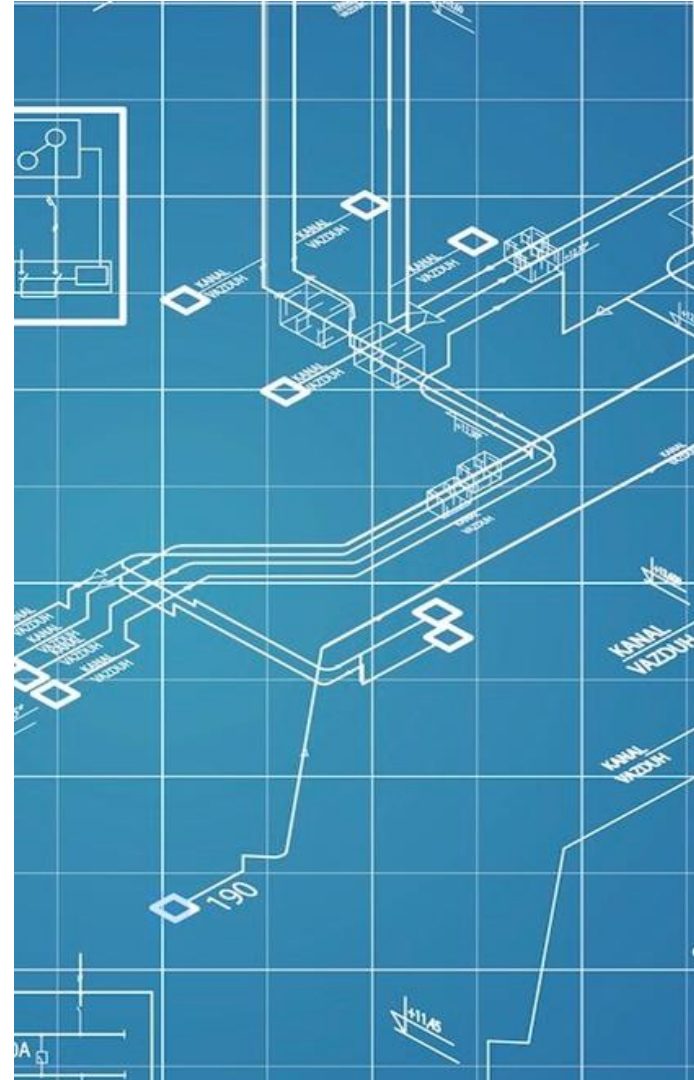
Identity & Access Management (Entra ID)

- Authentication & Authorization
- Internal & External Identity
- Employee and Customer Identity
- Conditional Access & Zero Trust



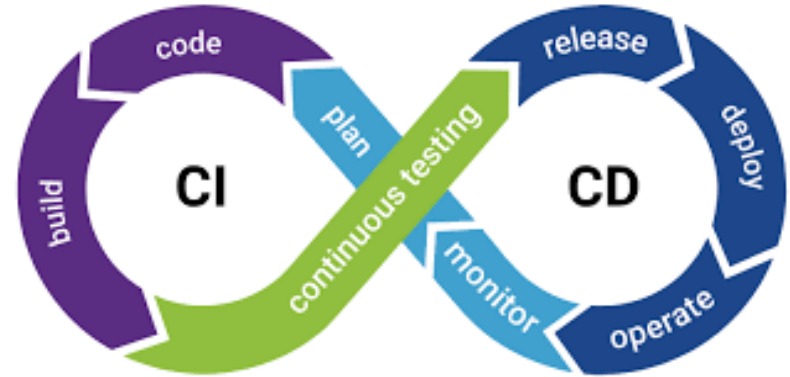
Infrastructure as Code

- Manage Infra as declarative Code
- Changes are applied automatically
- Apply Software Engineering principles & practices



CI/CD

- Integrate with Every Change
- Release with Every Change
- Deploy with Every Change
- Get Fast Feedback



Observability

- Logs
- Metrics
- Distributed tracing
- Alerts



Cost & Business Value



Managing Costs in PaaS

- Azure Cost Management
- Azure Cost Calculator
- Understand each service's cost model



When is PaaS worth it ?

- For New Apps → **Big Benefits**
 - Faster Time to Market
 - Scalability
 - Simplified Operations
- Existing Workloads → **Case By Case**
 - Lift-and-shift may increase costs
 - Re-architecting required
 - Evaluate ROI

Wrap-up



Key Takeaways

- Faster Innovation
- PaaS changes operations
- Scalability built-in
- Security is available
- Cost is manageable
- **Success with PaaS =**
People + Process + Platform

***"The important thing is not to
stop questioning"***

Albert Einstein

An aerial photograph of a harbor with a large blue brushstroke overlay. The brushstroke is a thick, textured blue line that starts from the top left and sweeps across the upper half of the image. The harbor below shows a marina with many small boats, a sandy beach, and a city skyline in the distance.

Thank You!